



Ningbo Anchor Fasteners Industrial Co.,LTD.  
(Headquarters)

Add: No.3, Zhangting Industrial Development Zone,  
Yuyao, Ningbo, Zhejiang Province, China.

Tel: +86(0574)56319999

E-mail: anchor@china-anchor.com



**NINGBO ANCHOR**  
**FASTENERS INDUSTRIAL CO., LTD.**

Concrete Screw



ningbo-anchor-group



www.china-anchor.com

安基遠  
共享

拓  
未來

A NCHOR  
N ICETY  
C REATION  
H ONOR  
O RDER  
R ESEARCH  
S ERVICE

*Solid foundation creates visionary ideas*



Ningbo Anchor Fasteners Industrial Co., Ltd., established in 1995, is a Taiwanese proprietor enterprise, located in Yuyao, Ningbo City. The start-up registered investment capital was 4 million USD and has now reached 23.3 million USD. As the mother company of Ningbo Anchor, NAF Industrial and its subsidiaries specialize in professionally manufacturing construction hardware, automotive parts, hand tool sets, hydraulic fittings and engineering mechanical parts. We are a member of China National Standard Committee and the producer for quality products.

We are equipped with 1000+ advanced multi-station cold forming machine, CNC auto-lathe, secondary precision machining machine, and inspection machine. We foresee ourselves to become fully automated for intellectual production in 2028. By streamlining and integrating the in-house processes from wire drawing, cold forming, secondary post machining, plating, and to packaging, we are able to have good control on quality assurance and lead time in order to fulfill our customers' request.

To leverage ourselves and bring our quality management system to another level, we have been certified by ISO9001:2015 and IATF16949:2016, while acquiring ICC for the US market, CE, and ETA for European markets. NAF Industrial was rated "Leading High-end Technical Manufacturer" in 2009 and was awarded again in 2017 in China. We are known for "Famous Corporate/Brand of Zhejiang Province" and currently hold 29+ patents. Moreover, as a professional manufacturer of fasteners and hardware tools, we are one of the key members of national standard drafting committee for GB/T73390.1-2004, the standard for Socket/Wrench; and for GB/T22795-2008, the standard for expansion anchor bolt for concrete application.

We started to engage China domestic markets in 2005 and have achieved substantial result within a decade by establishing the subsidiaries: Zhejiang Toolking Hardware & Tools Co., Ltd., Ningbo Hangyi Automotive Parts Co., Ltd., and Ningbo Zhen Rui Hardware Tools Co., Ltd. These additional production sites allow us to expand our product lines and broaden the customer base.

We dedicated ourselves in partnering with our clients to become strategic alliance in the international business not only as an OEM but also as ODM and OBM. In 2013, we were awarded "The Base for Hardware RD and Production in China".

ToolKing ( ) is our self-owned brand. Its product lines cover professional hand tools, master tool sets, electronic tools, pneumatic tools and accessories, hydraulic lifting tools, auto repair tools, combined with a total of 18 categories with more than 4,000 skus. Our products are verified by Shanghai TIRI (Tool Industry Research Institute) and are widely applied in the industries of mining, auto repair and maintenance, ship building, electricity, steel, railway, construction, and interior.

We position ourselves to be an industrial solutions provider by delivering quality-guaranteed products combined with cost saving initiatives to the international and China domestic customers.

"Quality Assurance, Technology Innovation, Customer Satisfaction" is always our goal when providing our product and service to our valued customers. We are planning to go public within years in order to grow and create a win-win situation with our customers.



Management Principles  
Vision & Mission

CHANG CHIN-CHIN  
President

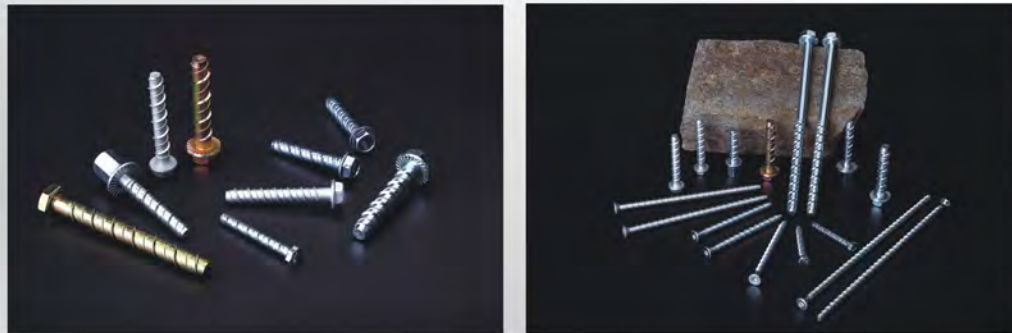


As president of Ningbo Anchor, Mr CHANG CHIN-CHIN is nominated as executive director of China National Hardware Association, Hardware Tools Branch; director of China National Hardware Electric and Chemical Products Commercial Association (CNHECPCA); standing director of Taiwan Merchant Association Ningbo; vice-chairman of Ningbo Fasteners Industry association; vice-chairman of Ningbo Hardware Association; vice-chairman of YuYao Hardware Association; vice director & Secretary-General of YuYao Taiwanese Association; director of YuYao Enterprise Confederation; vice president of JCI for Dagang mountain, Taiwan; supervisor of TFTA; director of Taiwan Industrial Fasteners Institute; and top news personalities 2010 in China hardware industry.

# Concrete Screw



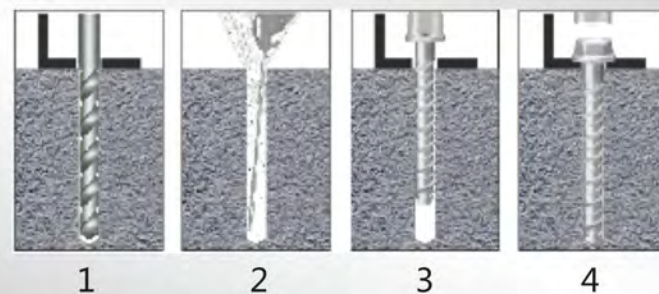
- Strong & Fast!
- Close to Edge Installation!
- Removable!



Concrete screws are reliable fastening elements with capacities that can be easily installed. This screw comes in various of sizes and styles allowing you to remove it without damaging the base materials after installation as well as installing it close to edges. They are the perfect fasteners for quickly anchoring objects to the concrete. Strong and Fast.

## Applications:

- Installation of Racks
- Seats
- Bridges
- Subway Tunnels
- Exterior Insulation Systems



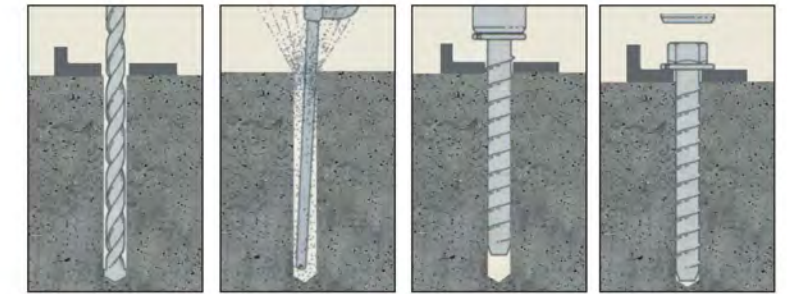
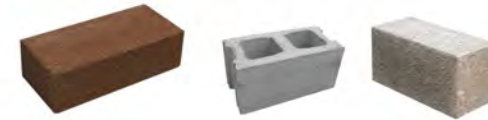
## ▶ APPLICATIONS



### TOOLS FOR INSTALLATION



### PERFECT FOR THESE MATERIALS



### Perfect for:



# HEX HEAD HEAVY DUTY CONCRETE SCREW



## ▶▶ HEX HEAD HEAVY DUTY CONCRETE SCREW



**Material: carbon steel.**

- Easy pivoting
- Small edge and space distances
- One piece non-expansion fixing anchor for close to edge fixing
- Save time, easily installed: Installs in less than half the time of wedge anchors or adhesive anchors
- Simply drill a pilot hole and drive the anchor by hand socket or impact wrench
- Easily removed: No grinding required to remove anchors
- Surface treatment: plain, yellow / blue zinc plated, dacrotized plated



Type	Dia [mm]	L [mm]	Drill [mm]	W [mm]	Per Box	Pull out Load kgf	Thread Length [mm]
06030	6.5	30	6.5	10	100	250	21
06045	6.5	45	6.5	10	100	440	36
06050	6.5	50	6.5	10	100	640	41
06075	6.5	75	6.5	10	100	640	66
06100	6.5	100	6.5	10	100	640	80
06120	6.5	120	6.5	10	100	640	80
08050	8	50	8	15	50	680	42
08060	8	60	8	15	50	760	52
08065	8	65	8	15	50	760	57
08075	8	75	8	15	50	760	67
08100	8	100	8	15	50	840	80
10060	10	60	10	17	50	890	52
10075	10	75	10	17	50	1120	67
10100	10	100	10	17	25	1120	92
10120	10	120	10	17	25	1120	100
10125	10	125	10	17	25	1120	100
10140	10	140	10	17	20	1120	100
10150	10	150	10	17	20	1120	100
10160	10	160	10	17	20	1120	100
10200	10	200	10	17	15	1120	100
10240	10	240	10	17	15	1120	100
10280	10	280	10	17	15	1410	100
12075	12	75	12	19	20	1950	67
12100	12	100	12	19	20	1950	92
12130	12	130	12	19	20	1950	120
12150	12	150	12	19	20	1950	120
12170	12	170	12	19	20	2200	120
12190	12	190	12	19	10	2200	120
12210	12	210	12	19	10	2200	120
12230	12	230	12	19	10	2200	120
12250	12	250	12	19	10	2200	120
12290	12	290	12	19	10	2200	120
12310	12	310	12	19	10	2200	120
14080	14	80	14	22	10	1530	72
14115	14	115	14	22	10	2120	107
14135	14	135	14	22	10	2120	120
14160	14	160	14	22	10	2120	120
16090	16	90	16	27	10	1950	82
16100	16	100	16	27	10	1950	82
16130	16	130	16	27	10	2700	122
16150	16	150	16	27	10	2700	142
16180	16	180	16	27	10	2700	150
16200	16	200	16	27	10	2700	150
16240	16	240	16	27	5	2700	150
16280	16	280	16	27	5	2700	150
16320	16	320	16	27	5	2700	150

## ▶▶ HEX FLANGE HEAD CONCRETE SCREW

**Material: carbon steel.**

- Easy pivoting
- Small edge and space distances
- One piece non-expansion fixing anchor for close to edge fixing
- Save time, easily installed: Installs in less than half the time of wedge anchors or adhesive anchors
- Simply drill a pilot hole and drive the anchor by hand socket or impact wrench
- Easily removed: No grinding required to remove anchors
- Surface treatment: plain, yellow / blue zinc plated, dactrotized plated



Type	Dia [mm]	L [mm]	Drill [mm]	W [mm]	Per Box	Pull out Load kgf	Thread Length [mm]
06030	6.5	30	6.5	10	100	250	21
06045	6.5	45	6.5	10	100	440	36
06050	6.5	50	6.5	10	100	640	41
06075	6.5	75	6.5	10	100	640	66
06100	6.5	100	6.5	10	100	640	80
06120	6.5	120	6.5	10	100	640	80
08050	8	50	8	15	50	680	42
08060	8	60	8	15	50	760	52
08065	8	65	8	15	50	760	57
08075	8	75	8	15	50	760	67
08100	8	100	8	15	50	840	80
10060	10	60	10	17	50	890	52
10075	10	75	10	17	50	1120	67
10100	10	100	10	17	25	1120	92
10120	10	120	10	17	25	1120	100
10125	10	125	10	17	25	1120	100
10140	10	140	10	17	20	1120	100
10150	10	150	10	17	20	1120	100
10160	10	160	10	17	20	1120	100
10200	10	200	10	17	15	1120	100
10240	10	240	10	17	15	1120	100
10280	10	280	10	17	15	1410	100
12075	12	75	12	19	20	1950	67
12100	12	100	12	19	20	1950	92
12130	12	130	12	19	20	1950	120
12150	12	150	12	19	20	1950	120
12170	12	170	12	19	20	2200	120
12190	12	190	12	19	10	2200	120
12210	12	210	12	19	10	2200	120
12230	12	230	12	19	10	2200	120
12250	12	250	12	19	10	2200	120
12290	12	290	12	19	10	2200	120
12310	12	310	12	19	10	2200	120
14080	14	80	14	22	10	1530	72
14115	14	115	14	22	10	2120	107
14135	14	135	14	22	10	2120	120
14160	14	160	14	22	10	2120	120
16090	16	90	16	27	10	1950	82
16100	16	100	16	27	10	1950	82
16130	16	130	16	27	10	2700	122
16150	16	150	16	27	10	2700	142
16180	16	180	16	27	10	2700	150
16200	16	200	16	27	10	2700	150
16240	16	240	16	27	5	2700	150
16280	16	280	16	27	5	2700	150
16320	16	320	16	27	5	2700	150

## ▶▶ HEX FLANGE HEAD CONCRETE SCREW

**Material: carbon steel.**

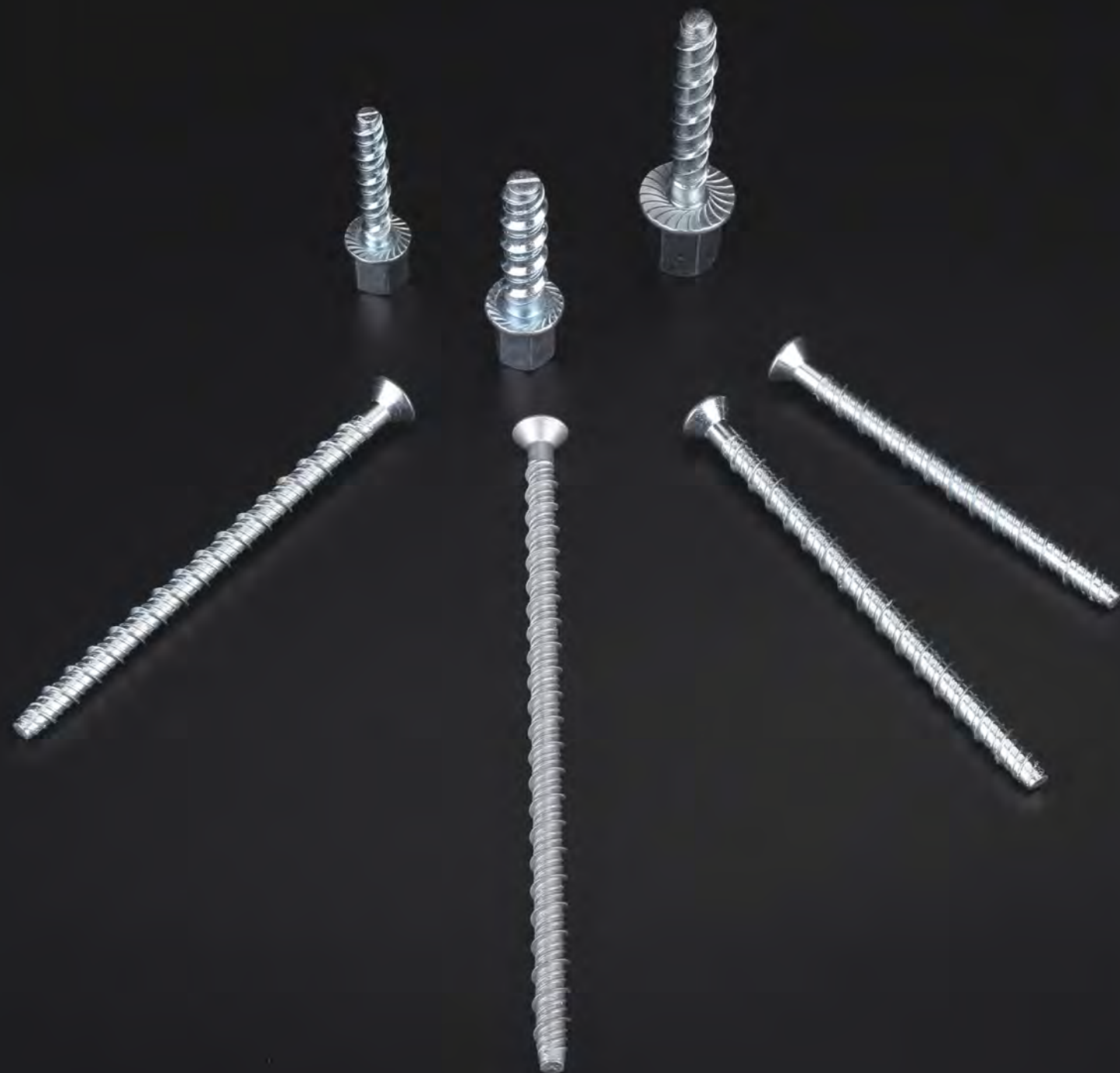
- Easy pivoting
- Small edge and space distances
- One time, easily installed: Installs in less than half the time of wedge anchors or adhesive anchors
- Simply drill a pilot hole and drive the anchor by hand socket or impact wrench
- Easily removed: No grinding required to remove anchors
- Surface treatment: plain, yellow / blue zinc plated, dactrotized plated



Type	Dia [in]	L [in]	Drill [in]	W [in]	Per Box	Pull out Load kgf	Thread Length [in]
14134	1/4	1-3/4	1/4	3/8	100	440	1.4
14234	1/4	2-3/4	1/4	3/8	100	640	2.4
14300	1/4	3	1/4	3/8	100	640	2.6
38300	3/8	3	3/8	9/16	50	1120	2.6
38400	3/8	4	3/8	9/16	50	1120	3
38500	3/8	5	3/8	9/16	50	1120	3
38600	3/8	6	3/8	9/16	50	1120	3
12300	1/2	3	1/2	3/4	25	2000	2.5
12400	1/2	4	1/2	3/4	20	2000	3.5
12500	1/2	5	1/2	3/4	20	2000	4
12600	1/2	6	1/2	3/4	20	2000	4
12800	1/2	8	1/2	3/4	20	2000	4
12120	1/2	12	1/2	3/4	10	2200	4
12130	1/2	13	1/2	3/4	10	2200	4
12140	1/2	14	1/2	3/4	10	2200	4
12150	1/2	15	1/2	3/4	10	2200	4
58400	5/8	4	5/8	15/16	10	2200	3.5
58500	5/8	5	5/8	15/16	10	2200	4.5
58600	5/8	6	5/8	15/16	10	2200	5
58612	5/8	6-1/2	5/8	15/16	10	2200	5
58800	5/8	8	5/8	15/16	10	2700	5
34400	3/4	4	3/4	1-1/8	10	2700	3.4
34500	3/4	5	3/4	1-1/8	10	2700	4.4
34600	3/4	6	3/4	1-1/8	10	2700	5.4
34700	3/4	7	3/4	1-1/8	10	2700	6
34812	3/4	8-1/2	3/4	1-1/8	10	2700	6
34100	3/4	10	3/4	1-1/8	5	2700	6



# SPECIAL SELF-TAPPING THREAD

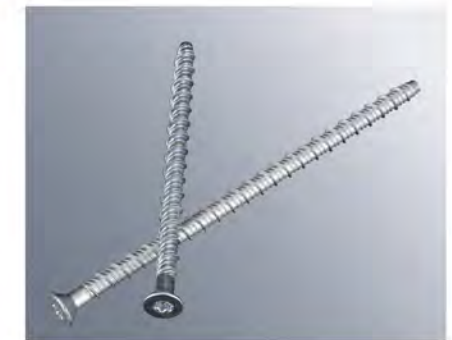


## ▶▶ COUNTERSUNK HEAD CONCRETE SCREW



**Material: carbon steel.**

- Fixes along the entire thread length to enable fixing into hollow sections, thick wall
- Amechanical fixing with no expansion stress on substrate
- Special self tapping thread allow for total removal of the anchor making it ideal for temporary fixings
- Fixes close to the edge
- Savetime: No torching or grinding required to remove anchors
- Surface treatment: plain, yellow / blue zinc plated
- Drive Type: torx 30



Type	Dia [mm]	L [mm]	Drill [mm]	Per Box	Pull out Load kgf
CSH75042	7.5	42	6	100	690
CSH75072	7.5	72	6	100	1120
CSH75092	7.5	92	6	100	1120
CSH75112	7.5	112	6	50	1120
CSH75132	7.5	132	6	50	1120
CSH75152	7.5	152	6	50	1120
CSH75162	7.5	162	6	50	1120

## ▶▶ HEX SOCKET CONCRETE SCREW

**Material : carbon steel .**

- The hex socket can be installed with various types of bolts and threaded rods



Type	Dia [mm]	L [mm]	Drill [mm]	W [mm]	Per Box	Pull out Load kgf
HDH380640	6.5	40	6	13	100	640
HDH120855	8	55	8	15	100	760
HDH380940	9	40	9	13	100	850



# CONCRETE FIXING SCREW

Material: carbon steel.

- Used for fixing window frames
- Small edge and space distances
- One piece non-expansion fixing anchor for close to edge fixing
- Save time, easily installed: Installs in less than half the time of wedge anchor or adhesive anchors
- Simply drill a pilot hole and drive the anchor by hand socket or impact wrench
- Easily removed: No grinding required to remove anchors
- Surface treatment: plain, yellow / blue zinc plated
- Drive Type: torx 30.



Type	Dia [mm]	L [mm]	Drill [ mm ]	Per Box	Pull out Load kgf
<b>Flat Head (F)</b>					
CFS75042-F	7.5	42	6	100	690
CFS75052-F	7.5	52	6	100	680
CFS75062-F	7.5	62	6	100	680
CFS75072-F	7.5	72	6	100	1120
CFS75082-F	7.5	82	6	100	1120
CFS75092-F	7.5	92	6	100	1120
CFS75102-F	7.5	102	6	100	1120
CFS75112-F	7.5	112	6	50	1120
CFS75122-F	7.5	122	6	50	1120
CFS75132-F	7.5	132	6	50	1120
CFS75142-F	7.5	142	6	50	1120
CFS75152-F	7.5	152	6	50	1120
CFS75162-F	7.5	162	6	50	1120
CFS75172-F	7.5	172	6	50	1120
CFS75182-F	7.5	182	6	25	1120
CFS75192-F	7.5	192	6	25	1120
CFS75202-F	7.5	202	6	25	1120
CFS75212-F	7.5	212	6	25	1120
<b>Round Head (R)</b>					
CFS75042-R	7.5	42	6	100	690
CFS75052-R	7.5	52	6	100	680
CFS75062-R	7.5	62	6	100	680
CFS75072-R	7.5	72	6	100	1120
CFS75082-R	7.5	82	6	100	1120
CFS75092-R	7.5	92	6	100	1120
CFS75102-R	7.5	102	6	100	1120
CFS75112-R	7.5	112	6	50	1120
CFS75122-R	7.5	122	6	50	1120
CFS75132-R	7.5	132	6	50	1120
CFS75142-R	7.5	142	6	50	1120
CFS75152-R	7.5	152	6	50	1120
CFS75162-R	7.5	162	6	50	1120
CFS75172-R	7.5	172	6	50	1120
CFS75182-R	7.5	182	6	25	1120
CFS75192-R	7.5	192	6	25	1120
CFS75202-R	7.5	202	6	25	1120
CFS75212-R	7.5	212	6	25	1120



# 宁波安拓

NINGBO ANCHOR



宁波安拓实业有限公司  
NINGBO ANCHOR FASTENERS INDUSTRIAL CO.,LTD.

地址: 浙江省宁波余姚市丈亭镇工业开发区3号 电话/Tel: +86-574-56319999  
Add: No.3, Zhangting Industrial Development Zone, Yuyao,Zhejiang Province, China



浙江拓进五金工具有限公司  
ZHEJIANG TOOL-KING HARDWARE & TOOLS CO.,LTD.

地址: 浙江省杭州湾上虞工业园区纬七路9号 电话/Tel: +86-575-82726366  
Add: No.9,Wei qi Rd., Hangzhou Bay Industrial Area, ShangyuCity, Zhejiang Province, China



越南精毅五金工具责任有限公司(授权总代理)  
VIETNAM ANTOOL HARDWARE TOOLS CO., LTD.(AUTHORIZED GENERAL AGENT)

地址: 越南平阳省宝鹏县来渊邑宝鹏工业区A-14B-CN座 电话/Tel: +84-274-3803856  
Add: Lot A-14B-CN, Bau Bang Industrial Park, Lai Uyen Commune, Bau Bang District, Binh Duong Province, Vietnam

